

MANGANO-MAZZELLA FARM

PRESERVE

aka Honey Hill Farm

Directions:

- * From Hadlyme Four Corners, follow Route 82 east.
- * After 0.6 miles turn left onto Honey Hill Road.
- * Continue for 1.5 miles.
- * The parking lot—for both this preserve and EHLT's Saunders Preserve - is on the right hand (south) side of Honey Hill Road.
- * The trailhead for Mangano-Mazzella Farm Preserve is on the left hand (north) side of Honey Hill Road.

For more information or to report any problems during your visit, see:
www.ehlt.org

Trail Facts:

- The main white trail is 1.4 miles long. It starts in a wooded area on the north side of Honey Hill Road and then emerges into a field, from which it follows an old woods road northward, passing under power lines (which bisect the property) and proceeding to a beaver pond, then splitting to form a loop that offers views of a valley stream and abandoned farmlands.
- The .4-mile blue trail, also proceeds northward to the beaver pond; however, this woodland trail does not follow old roads, and footing may be challenging in certain places.
- The 0.35-mile green trail, which can be accessed from both the white and blue trails, crosses the valley stream that drains the beaver pond and that flows southwest to Roaring Brook and the Connecticut River.
- The .22-mile red trail follows the edge of an abandoned field and ancient stone walls.

Permitted Activities:

- ◆ Hiking, Nature Study, Snowshoeing, Cross-Country Skiing, Birding

EAST HADDAM TRAILS

MANGANO-MAZZELLA

FARM PRESERVE

aka Honey Hill Farm

The 123.07-acre Mangano-Mazzella Farm Preserve was acquired by East Haddam Land Trust in 2024 from the Mangano and Mazzella families, who had owned it since 1977. Prior to that time, the property had been farmed for decades by the Rozensky family, who kept dairy cows and sold fruits and vegetables.

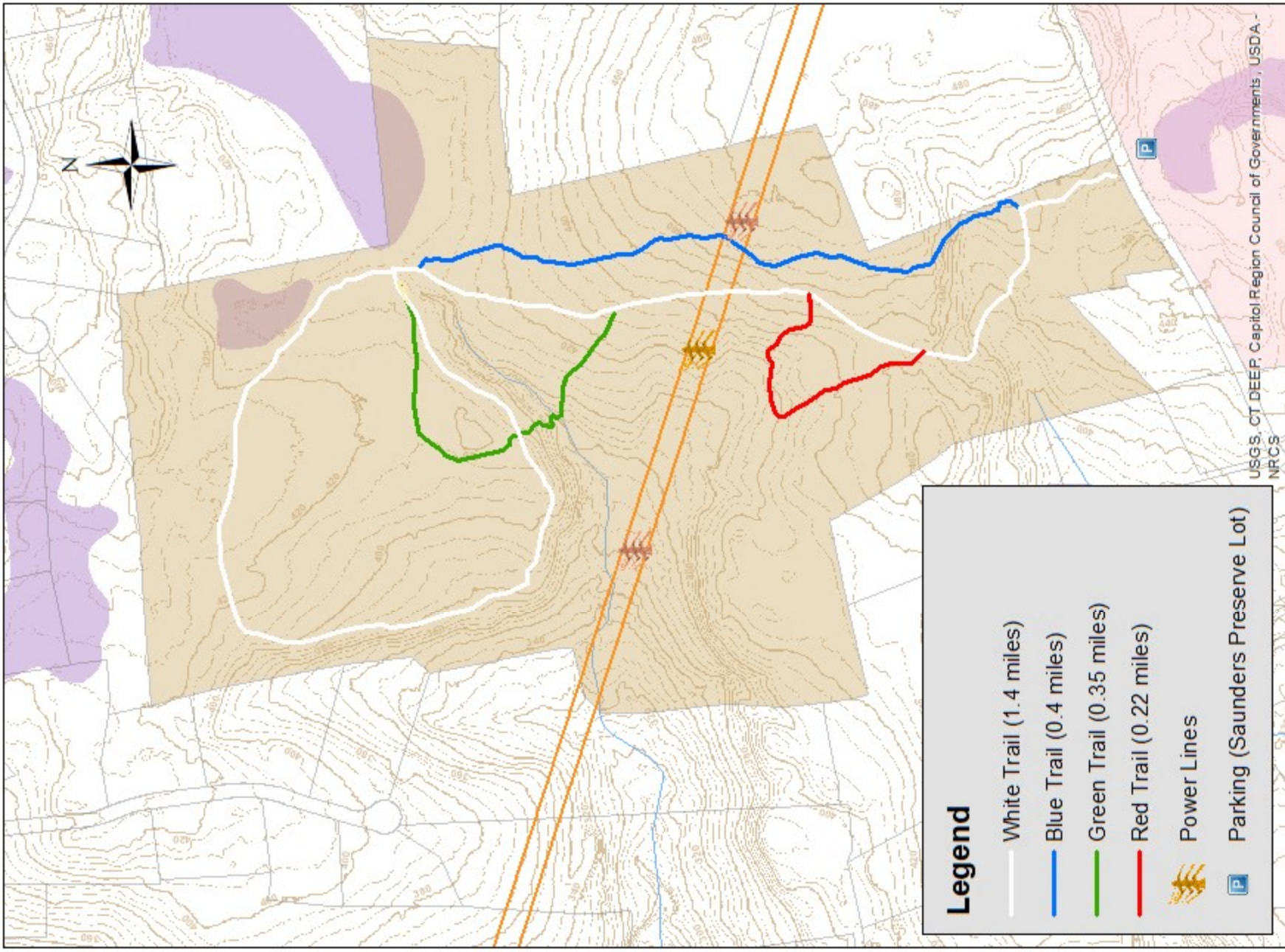
Acquisition of this parcel had been a goal pursued for many years by various conservation actors. East Haddam Land Trust was fortunate to be able to conclude the purchase with the assistance of grants from the Connecticut Department of Energy and Environmental Protection and the Bafflin Foundation, and with the aid of generous donations by land trust members and friends.



EAST HADDAM
YOUTH AND FAMILY
SERVICES



MANGANO-MAZZELLA FARM PRESERVE aka Honey Hill Farm



For general reference only

Managed by **EAST HADDAM LAND TRUST** 0 250 500 1,000 Feet